



Living room has fireplace, sliding glass doors to deck and view of the "Enchanted Mountains".



Fully equipped kitchen lets you decide-eat in or have the staff of Beauty View Farm cook for you!



Each of our comfy bedrooms are decorated in "country" chic!

Beauty View Farm offers you four seasons of fun through our affiliated School of the Environment and the Arts. We offer programs on the Summer and Winter Solstice, Bluebirds in Western New York, Apple Picking and Fall Foliage Hay Rides. Our Yoga Retreat will be held July 31-August 2 this year. Our website [www.thebeautyviewfarm.com](http://www.thebeautyviewfarm.com) gives you the weekend agenda and guest lecturers.



A little bit of history ....

## BEAUTY VIEW FARM

Beauty View Farm celebrated its 155<sup>th</sup> anniversary in August 2007. Land on Snyder Hill was purchased on July 1, 1828 from the Holland Land Company by William Higby and the current partners' great-great grandfather, Harrison Payne. On October 11, 1852, George A. Payne bought the first acre on our present location.

Great-grandfather, William V. Payne, acquired the land in 1858. In 1897 Grandmother Ida Bertha Payne Scholl inherited the land. Many of these ancestors are buried in historic SNYDER HILL CEMETERY, which is maintained through a trust from Rich Dairy Products of Buffalo, NY, another family with roots in Cattaraugus.

Paul Scholl, Ida's husband, and Ida continued expanding the dairy farm and opened THE PEOPLE'S DAIRY in Blasdell, NY.



On December 10, 1952, Ida sold the farm to Richard and Maribell (Scholl) Reid. Their children, Ann, Paul, Mary Ida, and Cecelia now own the farm as a Family Partnership. The grandchildren, Oliver, Richard, James, Joseph, and Michal Kathryn, will be the future partners of BEAUTY VIEW FARM.

# BEAUTY VIEW FARM



**7356 SNYDER HILL ROAD  
CATTARAUGUS  
NEW YORK 14719**

**Your home away from home!**

**Contact  
Cecelia R. Lullo  
Licensed Real Estate Broker  
716-474-3942**

E-mail: [beautyviewfarm@gmail.com](mailto:beautyviewfarm@gmail.com)  
Member Ellicottville Chamber of Commerce

**BEAUTY VIEW FARM**  
**7356 SNYDER HILL ROAD**  
**CATTARAUGUS, NY 14719**  
[\*\*beautyviewfarm@gmail.com\*\*](mailto:beautyviewfarm@gmail.com)

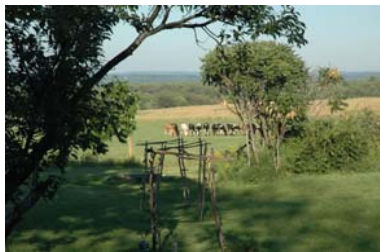
"The Enchanted Mountains"- "Welcome to Cattaraugus County-a place of rolling farmlands, lush forests, and picturesque waterways. The astonishing wooded hilltops overlook valleys that were sculpted by the Ice Age. The Allegheny River winds its way along the southern border, its banks full of history of the Native American and the early pioneer settlers. The Cattaraugus Creek forms the northern boundary and provides some of the best steel head trout fishing in the area, along with white water rafting through Zoar Valley." (Excerpted from "The Enchanted Mountains of Cattaraugus County Visitors Guide")

Beauty View Farm is located approximately 25 minutes from Ellicottville and Salamanca, New York. Seneca/Allegany Casino in Salamanca offers table games, slot machines, & video poker. World-renowned Chautauqua Institution is a one hour drive.

Your fully furnished home includes 3 bedrooms and sleeps up to 8 (one bedroom has a double bed, two bedrooms each with bunk beds, and a pullout couch in the family room). The country kitchen overlooks the rolling hills of Cattaraugus County.

Additional amenities include a utility room with space to store your summer and winter toys (fishing poles, skis and snow shoes). There is also a full size washer and dryer. Our fee is \$150 per night, and a deposit may be required depending on how long of a stay.

During your stay we can arrange a hay ride through the woods of Beauty View Farm with a stop for an outdoor campfire with s'mores or hot chocolate-or maybe pizza cooked in the outdoor pizza oven! Beauty View Farm offers you unique outdoor experiences. If you don't want to cook we can provide home cooked meals. We'll even clean up afterwards!



Fish for bass in one of our two ponds. Beauty View Farm's over 400 acres offers you many outdoor experiences



Holiday Valley Ski Resort

Ellicottville, NY



Ellicottville, NY

## Outdoor Picnic

For an extra special adventure, how about pizza cooked in our outdoor pizza oven. You choose your toppings, we'll do the cooking. This meal will be eaten at our picnic pavilion and includes an outdoor fire to cook your s'mores. We'll also provide the roasting sticks!



Picnic area includes pavilion, trails for cross country skiing, snowshoeing, hay rides and is the setting for our outdoor picnic

## Menu Selections

Many guests staying at Beauty View Farm prefer to have our staff prepare some meals for them. We try to use all natural ingredients whenever possible, and many of our foods come from our own Beauty View Farm "gardens". We also utilize foods from our Amish friends and neighbors. Menus can be adapted to your needs. E-mail [beautyviewfarm@gmail.com](mailto:beautyviewfarm@gmail.com) for menu and costs.



Visit our website at [thebeautyviewfarm.com](http://thebeautyviewfarm.com)